

# TO LET

New Retail Opportunity



Unit 15b  
Retail Unit  
TO LET

1,379 sq.ft  
(128.1 sq.m)



Cited

Joseph Gertons

jg@jgertons.co.uk

01748 840700

EVOLVE.

0207 228 6308

Harry Eades

h@harryeades.com

01984 000038

M

UNIT 15b

Rainham Shopping Centre,  
Rainham, Gillingham,  
Kent, ME8 7HW

Local Occupiers Include

TESCO Boots COSTA GREGGS  
cardfactory Poundland Ladbrokes b.m

### DESCRIPTION

M Rainham is a popular local retail destination, anchored by prime national occupiers such as B&M, Tesco, Boots and Greggs. The site benefits from ample parking and excellent proximity to public transport.

- Perimeter trunking
- Walking distance to main line station
- High street entrance

### UNIT SIZE

Total Area: 1,379 sq.ft (128.1 sq.m)

Ground Floor: 760 sq.ft (70.6 sq.m)

First Floor: 619 sq.ft (57.7 sq.m)

### RENT

£21,000 per annum

### BUSINESS RATES

Rateable Value: £2,917

### SERVICES

All mains services are available.

### SERVICE CHARGE & INSURANCE

Service Charge: £2,404

Insurance: £688

### ENERGY PERFORMANCE

EPC rating C. Further information available upon request.

### PLANNING

Subject to planning. The property falls under Planning Use Class E. It is the ingoing tenant's responsibility to verify that their intended use is acceptable to the Local Planning Authority.

### LEGAL COSTS

Each party is responsible for their own legal costs in connection with the granting of a lease.



28

Retail Units On-Site



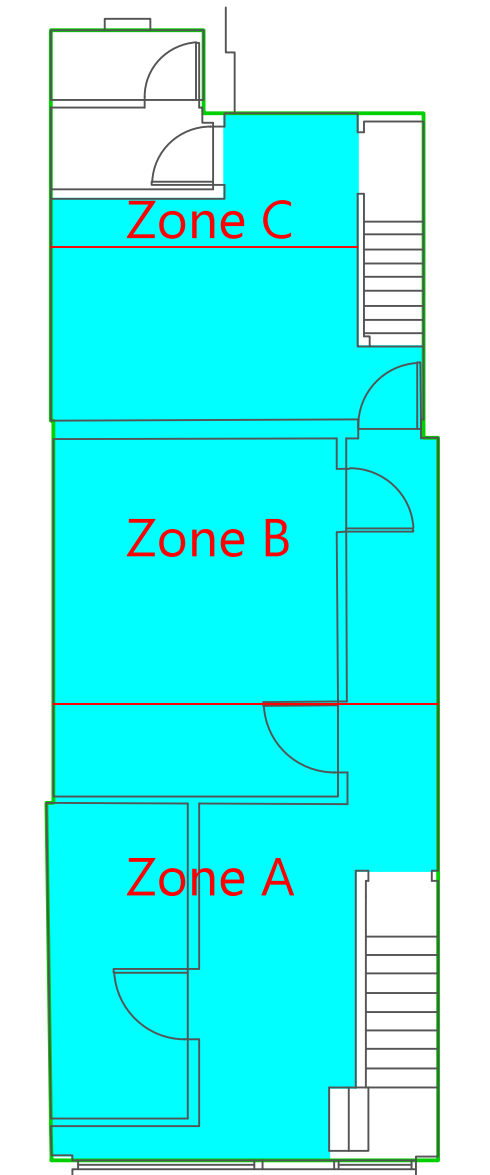
83,141 sq.ft

Total Area

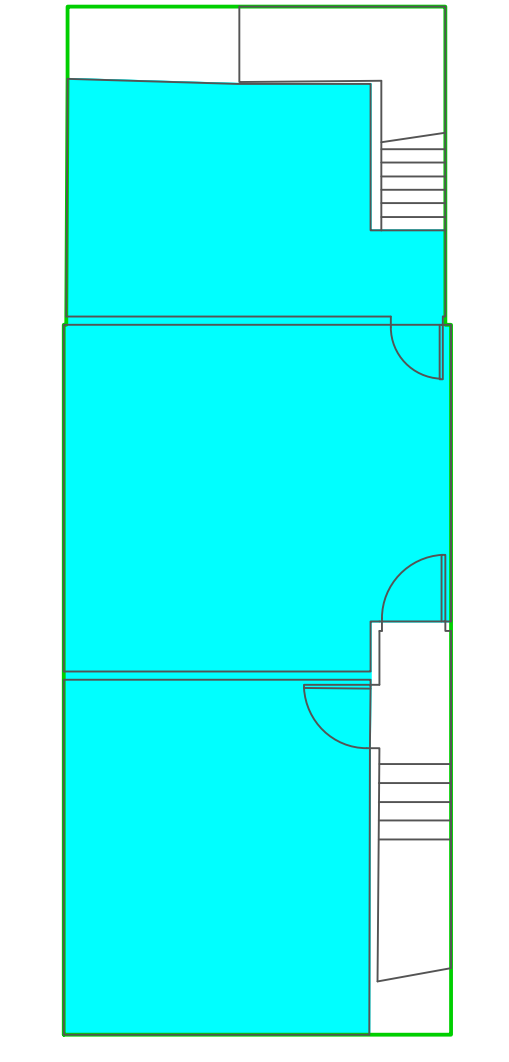


What Three Words

shipped.yesterday.target



Ground Floor



First Floor



# RAINHAM CENTRE

## SITE PLAN

M

# EVOLVE

part of MCore



**Adam Davies**

07792 701593  
amd@evolveestates.com

### Viewing

Strictly via prior appointment  
with the appointed agents



**Josh Gettins**

07545 846799  
josh@cited.co.uk



MISREPRESENTATION ACT 1967 London & Cambridge Properties Limited (Company Number 02895002) the registered office of which is at LCP House, Pensnett Estate, Kingswinford, West Midlands DY6 7NA its subsidiaries (as defined in section 156 of the Companies Act 2006) associated companies and employees ("we") give notice that: Whilst these particulars are believed to be correct no guarantee or warranty is given, or implied therein, nor do they form any part of a contract. We do our best to ensure all information in this brochure is accurate. If you find any inaccurate information, please let us know and where appropriate, we will correct it. We make no representation that information is accurate and up to date or complete. We accept no liability for any loss or damage caused by inaccurate information. This brochure gives a large amount of (statistical) information and there will inevitably be errors in it. Intending purchasers or tenants should not rely on the particulars in this brochure as statements or representations of fact but should satisfy themselves by inspection or otherwise as to the correctness of each of them. We provide this brochure free of charge and on the basis of no liability for the information given. In no event shall we be liable to you for any direct or indirect or consequential loss, loss of profit, revenue or goodwill arising from your use of the information contained herein. All terms implied by law are excluded by law. No person in our employment has any authority to make or give any representation or warranty whatsoever in relation to the property. SUBJECT TO CONTRACT. We recommend that legal advice is taken on all documentation before entering into a contract. You should be aware that the Code of Practice on Commercial Leases in England and Wales strongly recommends you seek professional advice from a qualified surveyor, solicitor or licensed conveyancer before agreeing or signing a business tenancy agreement. The Code is available through professional institutions and trade associations or through the website <https://www.rics.org.uk/upholding-professional-standards/sector-standards/real-estate/code-for-leasing-business-premises-1st-edition/>. LCP's privacy notices that apply to its use of your personal information are at [www.lcpgroup.co.uk/policies](http://www.lcpgroup.co.uk/policies). The privacy notice that applies to you will depend on the nature of your relationship with LCP, and in some cases more than one may apply to you. LCP's privacy policy giving a high level overview of how LCP approaches data protection and your personal information can be found at [www.lcpproperties.co.uk/properties/files/LCP-Privacy-Web-and-Data-Policy-May-2018.pdf](http://www.lcpproperties.co.uk/properties/files/LCP-Privacy-Web-and-Data-Policy-May-2018.pdf).

\*\*Average data taken from research carried out between 7th to 13th February 2018, where cars parking at the centre were counted by an automated system. Number of visitors per car averaged at 2 per vehicle. The figure does not include visitors arriving on public transport or walking to the centre.

03-06-25 JUNE25