

TO LET

Industrial / Warehouse / Trade Unit

7,858 sq.ft (730 sq.m)

AVAILABLE NOW!

Q1 2025

FOLLOWING REFURBISHMENT WORKS



Unit 20, Saddleback Road,
Westgate Industrial Estate,
Northampton. NN5 5HL

- Prominent trade counter / industrial unit located within an established trade counter location
- Fully refurbished including a new roof with 20 year warranty!
- Refurbished offices including new double-glazed windows, LED lighting and suspended ceilings
- LED's throughout warehouse and new insulated roller shutter door
- Nearby occupiers include:



LCP.

part of M'Core

**01384
400123**

searchlcp.co.uk



Unit 20, Saddleback Road, Westgate Industrial Estate, Northampton. NN5 5HL



J15a M1 - 2.9 miles

Northampton Town Football Club

J16 M1 - 4 miles

tenpin

Nando's

McDonald's

hobbycraft

Wickes

VW

COSTA COFFEE

Sainsbury's

Northampton Town Centre / Railway Station - 1.5 miles

LIDL

Boots

the gym group

ALDI

bm

Audi

Speedy

EDWARDS

next

M&S

loop LOGISTICS

CMG

ubbink Build smart.

KKC

UNIGLASS LIMITED

UNDER OFFER

UNDER OFFER

TO LET

Rexel

UNIT 20
CLICK FOR MAP

EMS
TRUCK & TRAILER PARTS

Dulux

Unit 20, Saddleback Road, Westgate Industrial Estate, Northampton. NN5 5HL



Areas (Approx. Gross Internal)

Warehouse	7,119 sq.ft	(661 sq.m)
Office and anc	693 sq.ft	(64.4 sq.m)
Total	7,812 sq.ft	(725.4 sq.m)

Description:

The property comprises of steel portal frame construction with external elevations of facing brick and cladding above. Internally the minimum eaves height is 5.3m. Loading is via an electric insulated roller shutter door. Internally the warehouse area is fitted with LED lighting throughout. Refurbished two storey office/ancillary accommodation is located at the front of the building. Externally there is a shared service yard and allocated car parking.

Refurbishment details:

- New tarmac to car park
- Full internal & external redecoration
- New double-glazed windows
- New entrance door to office block
- LED lighting
- Electric panel heaters in offices
- Refurbished toilets
- New roof to warehouse and offices with 20 year warranty
- Front elevation to be recladded

Specification:



Eaves height
is 5.3m



Ground level roller
shutter door



LED lighting



Electric panel
heaters

Unit 20, Saddleback Road, Westgate Industrial Estate, Northampton. NN5 5HL



Rent

Guide rent of £95,000 pa excl subject to lease terms and covenant.

Business Rates

Rateable Value £49,000.

All parties to make their own enquiries with West Northamptonshire Council.

Insurance

The Landlord will insure the premises the premiums to be recovered from the tenant.

Energy Performance

TBC following reassessment.

Planning

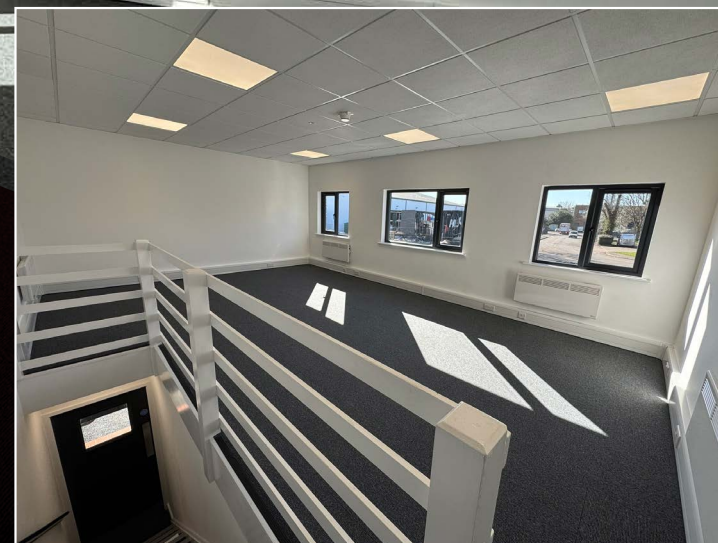
All interested parties are to make their own specific enquiries directly with the Local Planning Authority as to their intended use.

Legal and Surveyor Costs

Each party will be responsible for their own legal and surveyors costs incurred with the proposed transaction.

Anti Money Laundering (AML)

To comply with AML Regulations, identification checks and confirmation of source of funding is required from any lessee.



Unit 20, Saddleback Road, Westgate Industrial Estate, Northampton. NN5 5HL

Location - NN5 5HL

Northampton is an established industrial and logistics location strategically located on the M1 motorway in the heart of the “Golden Triangle”. Northampton is situated 66 miles north west of London and 55 miles south east of Birmingham. The town has excellent road communications with the M1 motorway all within 5 miles of the town centre. The A45 dual carriageway runs to the south of the town, providing a fast link between the M1 (J15) and the A14 at Thrapston. The Westgate Industrial Estate benefits from a strong mix of industrial, trade, automotive and retail occupiers, along with excellent access to Junctions 15a and 16 of the M1

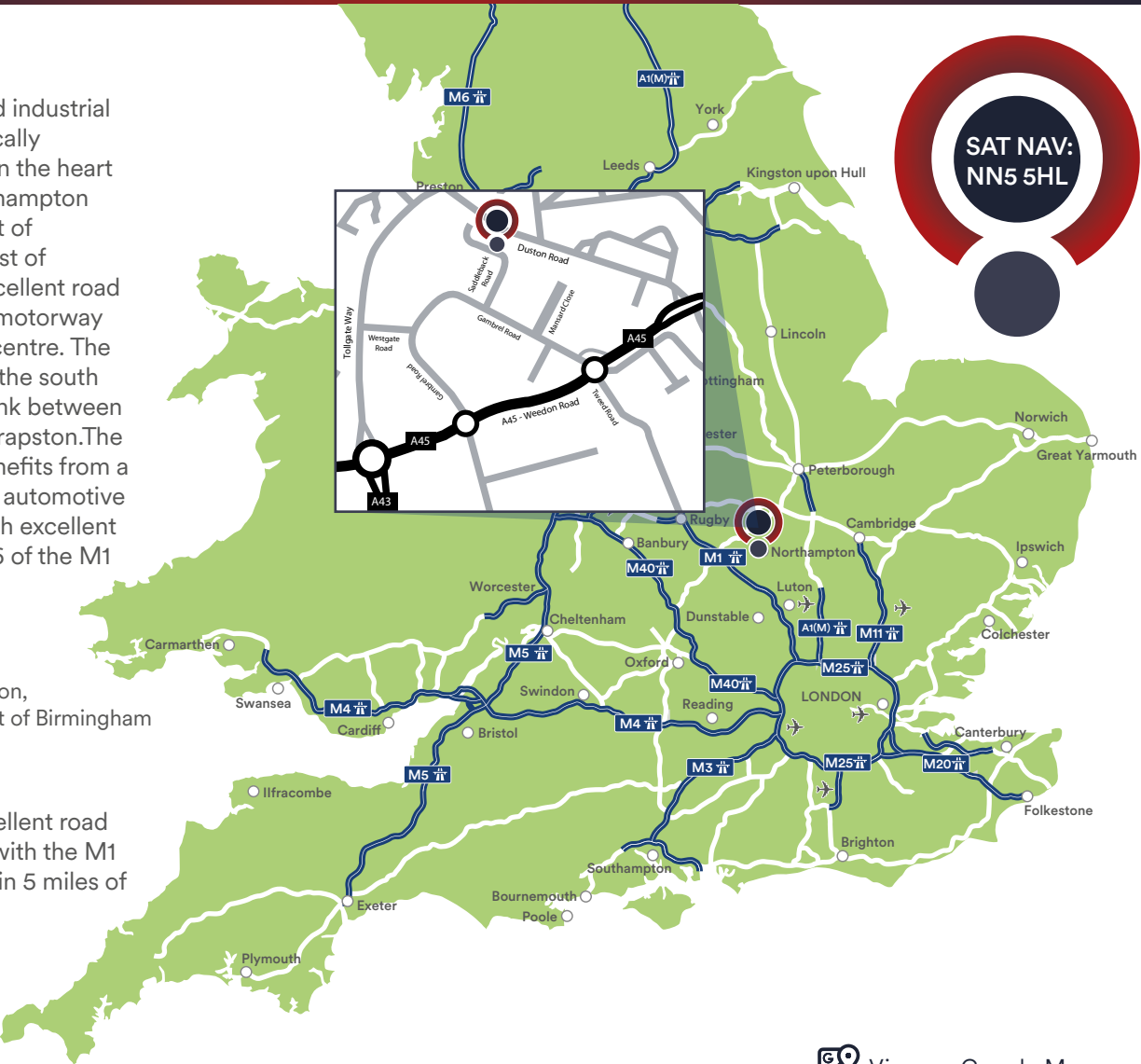


M1: 66 Miles
North West of London,
55 miles South West of Birmingham



The town has excellent road communications with the M1 motorway all within 5 miles of the town centre

MISREPRESENTATION ACT, 1967 London & Cambridge Properties Limited (Company Number 02895002) the registered office of which is at LCP House, Pensnett Estate, Kingswinford, West Midlands DY6 7NA its subsidiaries (as defined in section 1156 of the Companies Act 2006) associated companies and employees ("we") give notice that: Whilst these particulars are believed to be correct no guarantee or warranty is given, or implied therein, nor do they form any part of a contract. [We do our best to ensure all information in this brochure is accurate. If you find any inaccurate information, please let us know and where appropriate, we will correct it.] We make no representation that information is accurate and up to date or complete. We accept no liability for any loss or damage caused by inaccurate information. [This brochure gives a large amount of [statistical] information and there will inevitably be errors in it]. Intending purchasers or tenants should not rely on the particulars in this brochure as statements or representations of fact but should satisfy themselves by inspection or otherwise as to the correctness of each of them. We provide this brochure free of charge and on the basis of no liability for the information given. In no event shall we be liable to you for any direct or indirect or consequential loss, loss of profit, revenue or goodwill arising from your use of the information contained herein. All terms implied by law are excluded to the fullest extent permitted by law. No person in our employment has any authority to make or give any representation or warranty whatsoever in relation to the property. SUBJECT TO CONTRACT. We recommend that legal advice is taken on all documentation before entering into a contract. You should be aware that the Code of Practice on Commercial Leases in England and Wales strongly recommends you seek professional advice from a qualified surveyor, solicitor or licensed conveyancer before agreeing or signing a business tenancy agreement. The Code is available through professional institutions and trade associations or through the website: <https://www.rics.org/uk/upholding-professional-standards/sector-standards/real-estate/code-for-leasing-business-premises-1st-edition/> LCP's privacy notices that apply to its use of your personal information are at www.lcpgroup.co.uk/policies. The privacy notice that applies to you will depend on the nature of your relationship with LCP, and in some cases more than one may apply to you. LCP's privacy policy giving a high level overview of how LCP approaches data protection and your personal information can be found at www.lcpproperties.co.uk/uploads/files/LCP-Privacy-Web-and-Data-Policy-May-2018.pdf.



View on Google Maps

Viewing
Strictly via prior appointment
with the appointed agent

01604 60 40 20

Oliver Thompson
07837 191 054
Oliver@tdbre.co.uk

01384 400123
searchlcp.co.uk

Will Helm
07774 666805
WHelm@lcpproperties.co.uk