



# LEASING *brochure*

## RECENT LETTINGS:

Knock Nook | Launch Coffee  
Zibibbo | The Club House  
All Saints | & Other Stories  
The Whiskey Shop







Welcome to Princes Square,  
Glasgow's finest destination  
to shop, dine and socialise,  
set within a prime position  
on Buchanan Street.

# welcome

Located at the heart of Buchanan Street, our iconic 19th century building was voted Scotland's favourite historic building in 2017 and offers unrivalled premium surroundings in Glasgow for a unique shopping experience. The mix of quality food and beverage options with a high-quality tenant mix makes it the indoor location of choice for Glasgow's aspirational shopper.



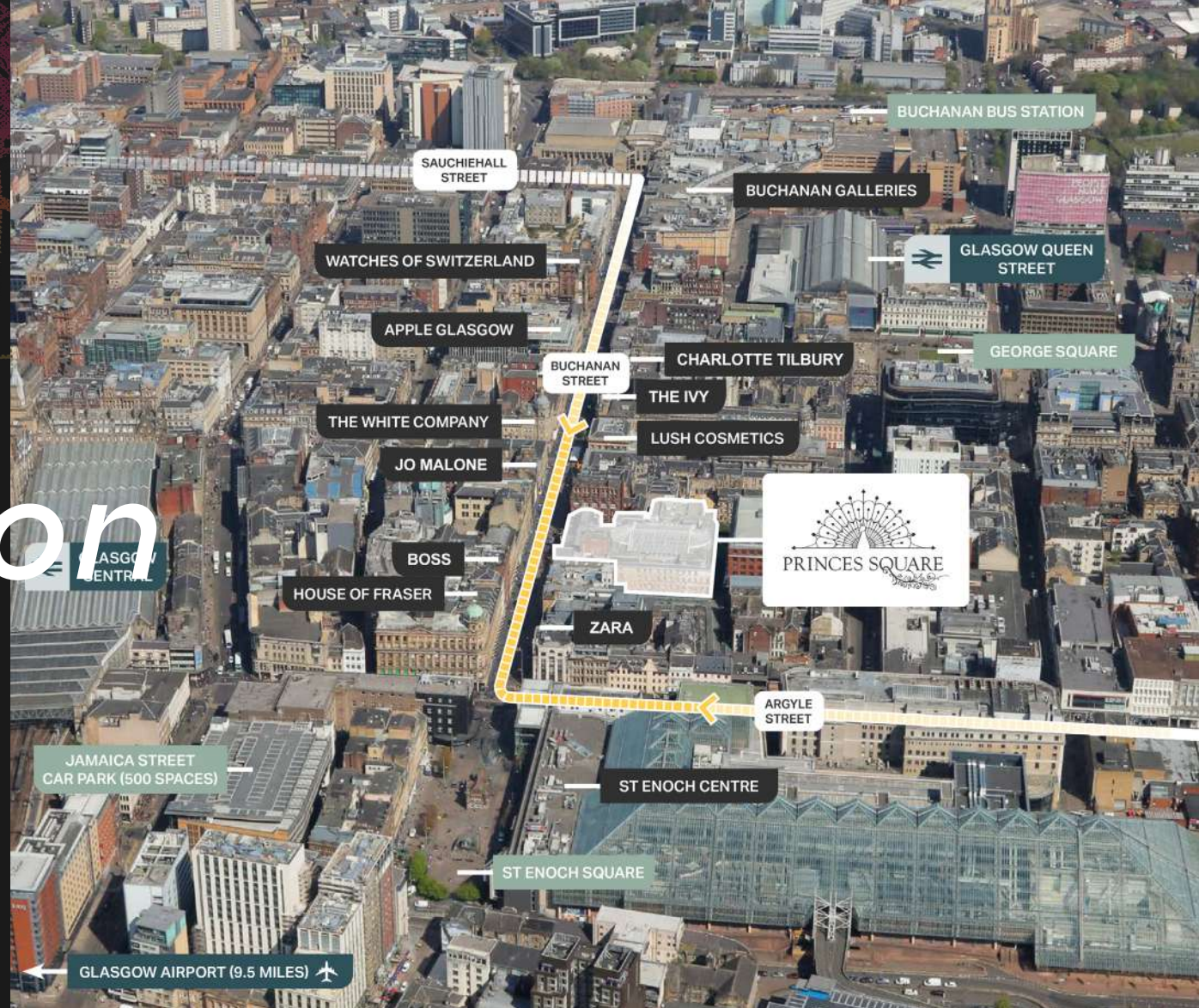




# OUR *location*

- 4th largest city in the UK
- Scotland's best retailing destination
- In the heart of Glasgow city centre accessed from both Buchanan Street & Queen Street.
- No vacancy on Buchanan Street.

Source: Glasgow Retail Prospectus, Invest Glasgow





# OUR *shoppers*

Princes Square focuses on the four highest spending ACORN\* groups:

- Educated Urbanites
- Prosperous Professionals
- Wealthy Executives
- Aspiring Singles

\*ACORN is a consumer classification that segments the UK population.



These groups spend more than £1,000 per capita on clothing and footwear, which represents strong local demand for the premium fashion brands at Princes Square.

The Wealthy Executives group is also well-represented within the catchment, adding a further spend of £950 per annum. It is important not to overlook the less affluent catchment, as this spend is often even more due to the status associated with fashion and brand affiliation.







- The city ranks second only to London's West End in the UK Retail Ranking.

Source: Geolytix, May 2024.



- Active frontage onto Scotland's prime retail pitch.



5

floors of retail and hospitality

118,625 SQ FT

of quality accommodation

22.5k

website visits per month

£928

Average retail density per sq. ft.

Glasgow remains within the UK's top 10 retail centres

Source: GMAP Analytics



Alexander  
McQueen

ARGENTO

ALLSAINTS

& other  
Stories

**LAUNCH**  
COFFEE

**CAFE  
BOM  
BON**  
Cafe Coffee Cake

CARVELA

COS

Cranachan  
Cakes & More Scottish Dainties

DIAMOND HEAVEN

DOWER & HALL

EMPIRE

EVERYMAN

IL PAVONE  
EST 1991 ITALIAN RESTAURANT & BAR

Knock Nook  
GLASGOW

KURT GEIGER

MAISON  
by GLASCHU

THE WHISKY SHOP

THE  
DELPHINE

Shin Fleet

SPACE NK.apothecary

Sweaty Betty  
LONDON

ZIBIBBO

TINDERBOX  
RESTAURANT

INDIVIDUALLY  
**Zizzi**  
ITALIAN

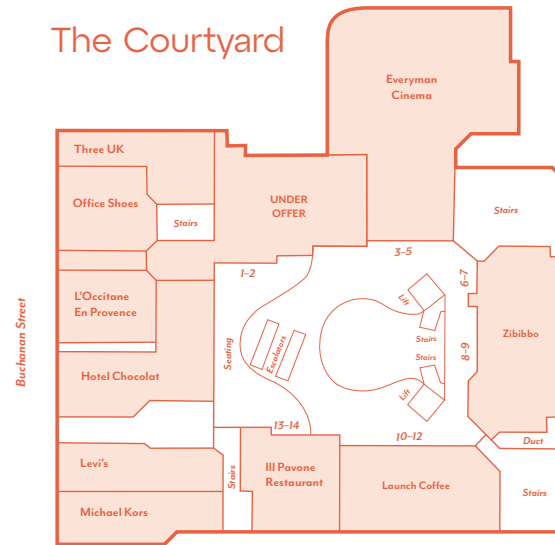


Princes Square has seen consistent long-term commitment from aspirational tenants

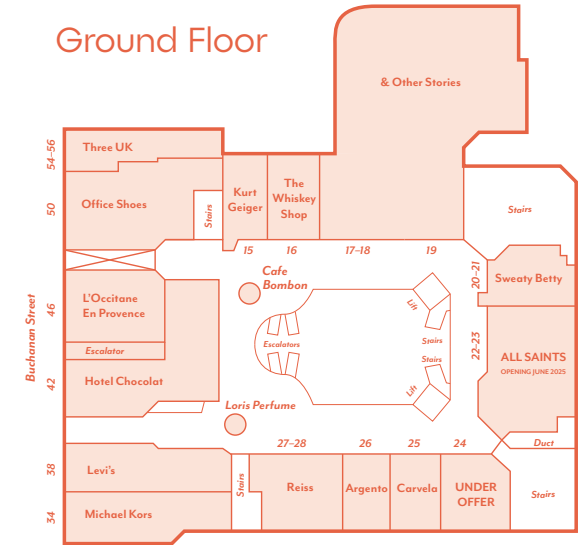
# FLOOR plans



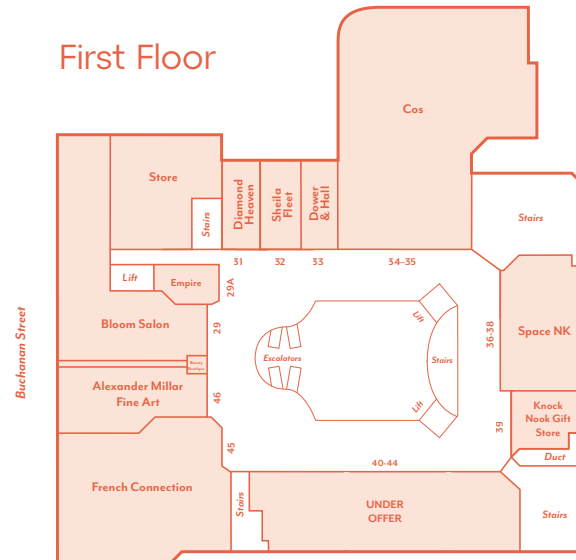
The Courtyard



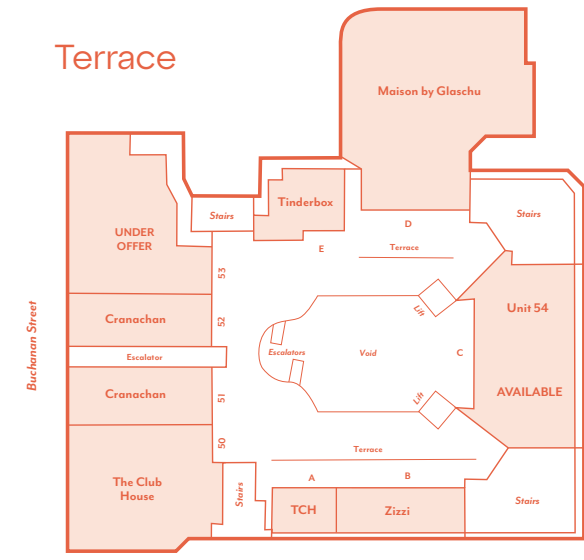
Ground Floor



First Floor



Terrace







## CONTACT

**Rakesh Joshi**

T +44 (0)7741 385 322

E [rjoshi@lcpproperties.co.uk](mailto:rjoshi@lcpproperties.co.uk)

**Alex Williams**

M +44 (0)7741 951843

E [awilliams@lcpproperties.co.uk](mailto:awilliams@lcpproperties.co.uk)

**Stuart Moncur**

M +44 (0)7887 795 506

E [stuart.moncur@savills.com](mailto:stuart.moncur@savills.com)

**Charlie Hall**

M +44 (0)7807 999 693

E [charlie.hall@savills.com](mailto:charlie.hall@savills.com)

**James Godfrey**

M +44 (0)7768 190114

E [james@culverwell.co.uk](mailto:james@culverwell.co.uk)

**LCP**  
part of MCore

01384  
400123

[searchlcp.co.uk](http://searchlcp.co.uk)



**Culverwell**

0131 226 6611  
[www.culverwell.co.uk](http://www.culverwell.co.uk)



@princesssquare



@princesssquare



MISREPRESENTATION ACT, 1967 London & Cambridge Properties Limited (Company Number 02895002) the registered office of which is at LCP House, Pensnett Estate, Kingswinford, West Midlands DY6 7NA its subsidiaries (as defined in section 1156 of the Companies Act 2006) associated companies and employees ("we") give notice that: Whilst these particulars are believed to be correct no guarantee or warranty is given, or implied therein, nor do they form any part of a contract. [We do our best to ensure all information in this brochure is accurate. If you find any inaccurate information, please let us know and where appropriate, we will correct it.] We make no representation that information is accurate and up to date or complete. We accept no liability for any loss or damage caused by inaccurate information. [This brochure gives a large amount of [statistical] information and there will inevitably be errors in it]. Intending purchasers or tenants should not rely on the particulars in this brochure as statements or representations of fact but should satisfy themselves by inspection or otherwise as to the correctness of each of them. We provide this brochure free of charge and on the basis of no liability for the information given. In no event shall we be liable to you for any direct or indirect or consequential loss, loss of profit, revenue or goodwill arising from your use of the information contained herein. All terms implied by law are excluded to the fullest extent permitted by law. No person in our employment has any authority to make or give any representation or warranty whatsoever in relation to the property. SUBJECT TO CONTRACT. We recommend that legal advice is taken on all documentation before entering into a contract. You should be aware that the Code of Practice on Commercial Leases in England and Wales strongly recommends you seek professional advice from a qualified surveyor, solicitor or licensed conveyancer before agreeing or signing a business tenancy agreement. The Code is available through professional institutions and trade associations or through the website <https://www.rics.org/uk/upholding-professional-standards/sector-standards/real-estate/code-for-leasing-business-premises-1st-edition/>. LCP's privacy notices that apply to its use of your personal information are at [www.lcpgroup.co.uk/policies](http://www.lcpgroup.co.uk/policies). The privacy notice that applies to you will depend on the nature of your relationship with LCP, and in some cases more than one may apply to you. LCP's privacy policy giving a high level overview of how LCP approaches data protection and your personal information can be found at [www.lcpproperties.co.uk/uploads/files/LCP-Privacy-Web-and-Data-Policy-May-2018.pdf](http://www.lcpproperties.co.uk/uploads/files/LCP-Privacy-Web-and-Data-Policy-May-2018.pdf).

[princesssquare.co.uk](http://princesssquare.co.uk)

JUNE 2025