

# FOR SALE

RESIDENTIAL INVESTMENT OPPORTUNITY  
17 TWO BED APARTMENTS

## £1,150,000

13,728 sq.ft  
(1,275.3 sq.m)



**M**

**M CHEVELEY PARK**

Apartments 1a-17a, M Cheveley,  
Carrville, County Durham,  
DH1 2AA

**LCP**  
part of MCore

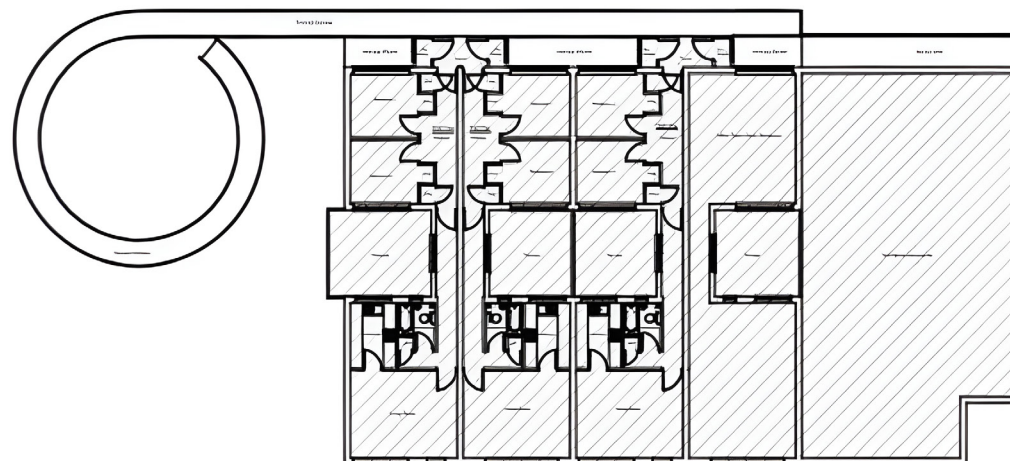
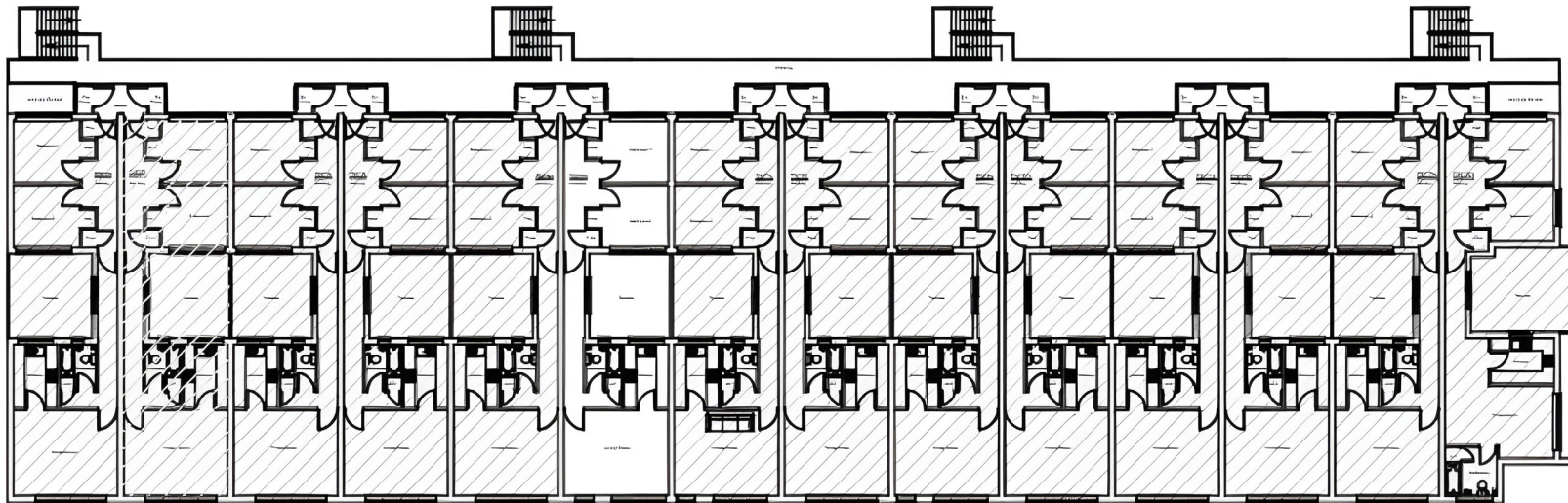
02072  
335255

[searchlcp.co.uk](http://searchlcp.co.uk)





# M CHEVELEY PARK



## EXECUTIVE SUMMARY

- 17 flats available but way of a 999 year long leasehold at a peppercorn ground rent.
- Comprises two blocks.
- All flats are two bedroom.
- Producing an annual income of £81,864 with two vacant flats.
- Break up potential.
- Rental growth to be capitalised on.
- Offers in the region of £1,150,000 (one million one hundred and fifty thousand pounds) are invited for the long leasehold interests. This represents a low capital value of £83.83 psf, which is lower than replacement cost.

## PRICE

£1,150,000 for all 17 flats

## SERVICE CHARGE

Further information provided upon application

## TENURE

Long Leasehold

## ENERGY PERFORMANCE

Further information available upon request

## LEGAL COSTS

Each party is responsible for their own legal costs



# M CHEVELEY PARK



## LOCATION

The property is located in the suburb of Belmont, which is situated in the northeastern part of Durham. The buildings are located on The Links, at the junction with Broomside Lanes. The position provides quick access north and south with the A1 running through Belmont. Local amenities for the area are excellent, with numerous shops underneath the apartments, offering a range of retailers, whilst Ramside Golf Course, Banatyne Club and Spa and Ramside Spa and Hotel are all located nearby.

## DESCRIPTION

There are seventeen apartments located across two blocks situated above retail units, each being very spacious comprising of hall, living room, kitchen, two bedrooms, bathroom and w/c. There is also a small enclosed courtyard to each flat and externally there are common grounds and car parking facilities.

## AREAS

Flat 1a	807 sq.ft	(74.9 sq.m)
Flat 2a	816 sq.ft	(75.8 sq.m)
Flat 3a	807 sq.ft	(74.9 sq.m)
Flat 4a	807 sq.ft	(74.9 sq.m)
Flat 5a	807 sq.ft	(74.9 sq.m)
Flat 6a	807 sq.ft	(74.9 sq.m)
Flat 7a	807 sq.ft	(74.9 sq.m)
Flat 8a	807 sq.ft	(74.9 sq.m)
Flat 9a	807 sq.ft	(74.9 sq.m)
Flat 10a	807 sq.ft	(74.9 sq.m)
Flat 11a	807 sq.ft	(74.9 sq.m)
Flat 12a	807 sq.ft	(74.9 sq.m)
Flat 13a	807 sq.ft	(74.9 sq.m)
Flat 14a	807 sq.ft	(74.9 sq.m)
Flat 15a	807 sq.ft	(74.9 sq.m)
Flat 16a	807 sq.ft	(74.9 sq.m)
Flat 17a	807 sq.ft	(74.9 sq.m)
<b>TOTAL</b>	<b>13,728 sq.ft</b>	<b>(1,274.2 sq.m)</b>



# M CHEVELEY PARK

## TENANCY SCHEDULE

Flats	Start Date	Term (Yrs)	End Date	Rent (£)	Area (Sq.ft)	Comments
1a	24-06-24	15.3	23-09-19	£4,560	807	Residential
2a		VACANT			816	Residential
3a	27-09-18	0.5	26-03-19	£4,800	807	Residential
4a	05-08-22	1	04-08-23	£6,000	807	Residential
5a		VACANT			807	Residential
6a	20-09-22	1	19-09-23	£6,000	807	Residential
7a	07-06-17	0.5	06-12-17	£4,500	807	Residential
8a	15-06-16	1.5	14-12-17	£4,200	807	Residential
9a	07-07-22	1	06-07-23	£5,400	807	Residential
10a	07-09-23	1	06-09-24	£6,000	807	Residential
11a	07-06-19	1	31-05-20	£5,400	807	Residential
12a	15-06-20	1	14-06-21	£5,700	807	Residential
13a	20-09-22	1	19-09-23	£6,000	807	Residential
14a	01-07-22	1	30-06-23	£5,400	807	Residential
15a	07-03-19	1	06-03-20	£5,760	807	Residential
16a	10-04-25	0.5	09-10-25	£5,004	807	Residential
17a	03-05-24	1	02-05-25	£7,140	807	Residential
TOTAL				£81,864	13,728	



# M CHEVELEY PARK



## Viewing

Strictly via prior appointment  
with the appointed agents

# LCP.

part of M Core



**Will Helm**

M: 07774 666805

E: WHelm@lcpproperties.co.uk



# Assembly.

Commercial Real Estate

**Kevin Neun**

M: 07717 874 710

E: kevin@assemblycre.co.uk

**Jamie Mackenzie**

M: 07533 348 479

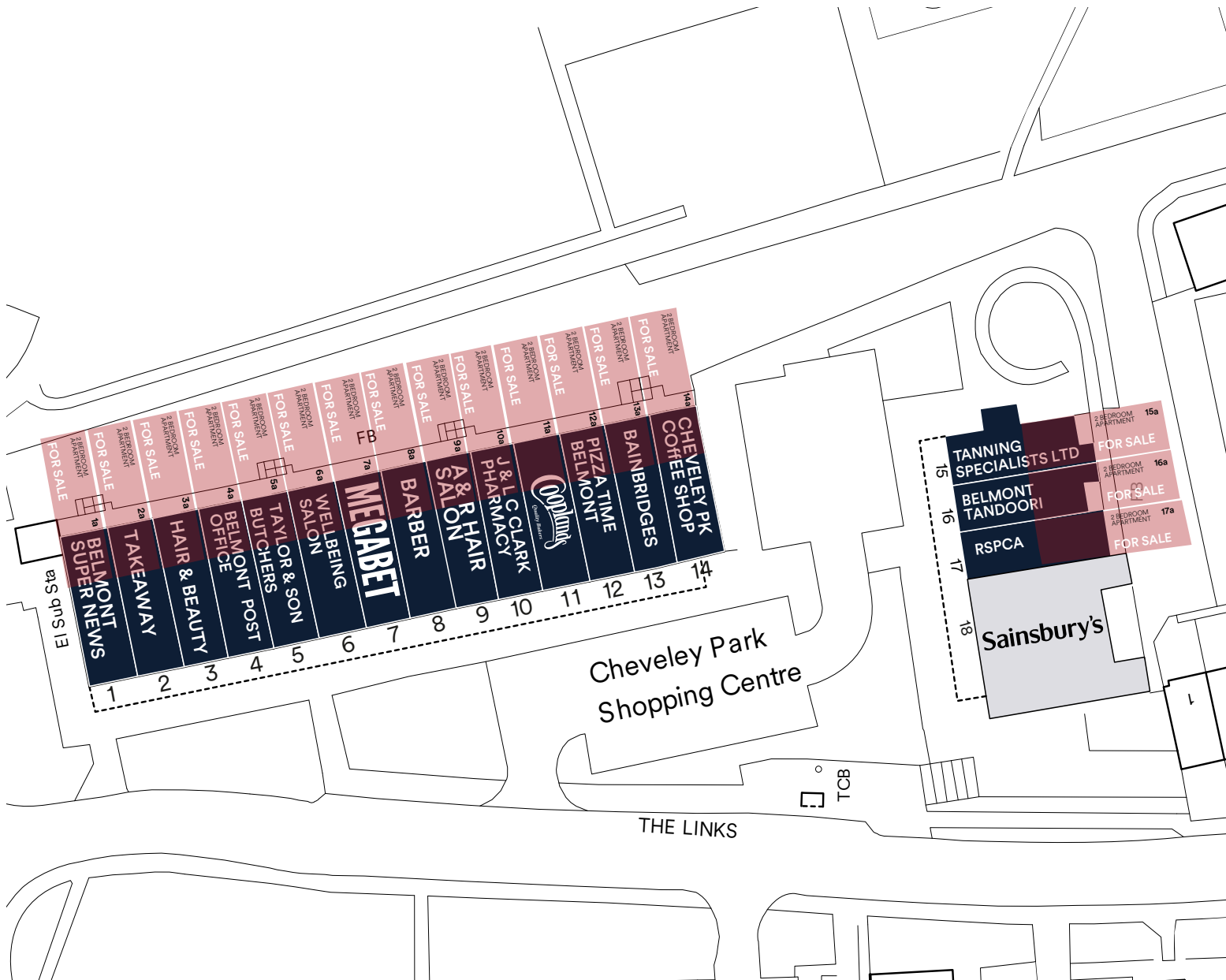
E: jamie@assemblycre.co.uk

# Andrew Craig

**Georgia Taylor**

M: 0191 487 5330

E: gtaylor@andrewcraig.co.uk



MISREPRESENTATION ACT 1967 London & Cambridge Properties Limited (Company Number 02898002) the registered office of which is at LCP House, Pensnett Estate, Kingswinford, West Midlands DY6 7NA its subsidiaries (as defined in section 1156 of the Companies Act 2006) associated companies and employees ("we") give notice that: Whilst these particulars are believed to be correct no guarantee or warranty is given, or implied therein, nor do they form any part of a contract. [We do our best to ensure all information in this brochure is accurate. If you find any inaccurate information, please let us know and where appropriate, we will correct it.] We make no representation that information is accurate and up to date or complete. We accept no liability for any loss or damage caused by inaccurate information. [This brochure gives a large amount of (statistical) information and there will inevitably be errors in it. Intending purchasers or tenants should not rely on the particulars in this brochure as statements or representations of fact but should satisfy themselves by inspection or otherwise as to the correctness of each of them. We provide this brochure free of charge and on the basis of no liability for the information given. In no event shall we be liable to you for any direct or indirect or consequential loss, loss of profit, revenue or goodwill arising from your use of the information contained herein. All terms implied by law are excluded to the fullest extent permitted by law. No person in our employment has any authority to make or give any representation or warranty whatsoever in relation to the property. SUBJECT TO CONTRACT. We recommend that legal advice is taken on all documentation before entering into a contract. You should be aware that the Code of Practice on Commercial Leases in England and Wales strongly recommends you seek professional advice from a qualified surveyor, solicitor or licensed conveyancer before agreeing or signing a business tenancy agreement. The Code is available through professional institutions and trade associations or through the website: <https://www.rics.org/uk/upholding-professional-standards/sector-standards/real-estate/code-for-leasing-business-premises-1st-edition/>. LCP's privacy notices that apply to its use of your personal information are at [www.lcpgroup.co.uk/policies](http://www.lcpgroup.co.uk/policies). The privacy notice that applies to you will depend on the nature of your relationship with LCP, and in some cases more than one may apply to you. LCP's privacy policy giving a high level overview of how LCP approaches data protection and your personal information can be found at [www.lcpproperties.co.uk/uploads/files/LCP-Privacy-Web-and-Data-Policy-May-2018.pdf](http://www.lcpproperties.co.uk/uploads/files/LCP-Privacy-Web-and-Data-Policy-May-2018.pdf).